



# Machine housing

## Security level up

● Mechanical engineering

● Realizations

● Cabling

○ Machines

The existing machine was only **weakly secured** and was prohibited for use at our customer's premises.

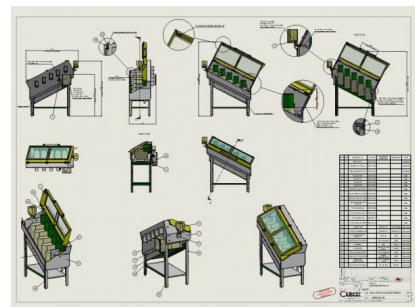
We were required to enclose the machine and **protect the operator** by installing a **safety sensor** on the door. The door also had to be easy to operate and allow the operator to see what was happening inside.

We manufactured **the enclosure in 2mm thick brushed stainless steel**. The machine legs were also covered with sheet metal for aesthetic purposes. We **updated the electrical box** and installed a safety sensor that switches off the motors if the door is opened.

The door is equipped with two gas struts **to balance the weight** of the door and keep it closed.

SPECIFICATIONS :

- **Dimensions: 1230mm x 1230mm x 610mm**
- **Door weight: 15kg**
- **Safety sensor**



Reference : 3552

Project added the 12/03/21



**CEREST**

20 Rue des Frères Lumiere  
68000 Colmar - FRANCE



**EMAIL**

cerest@cerest.com



**PHONE**

+33 (0)3.89.21.02.56



**INTERNET**

www.cerest.com