



# Robotic welding tool

## for laser process

● **Mechanische Studien**

● **Realisierungen**

○ **Verkabelung**

○ **Steuerungen**

This tool, attached to the Customer's robotic laser welding station, allows him to test the permissible clearances in the assembly before welding.

The associated test plan allows the Customer to determine the limits of his process.

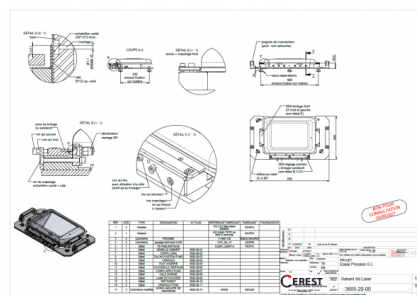
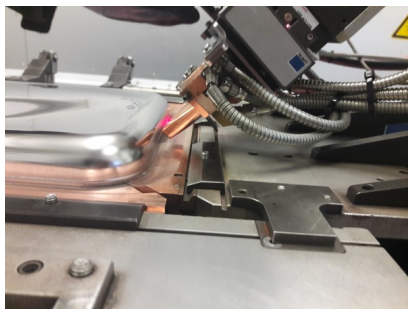
This tool is integrated into the robotic station by means of appropriate positioning and maintaining elements, indexes materializing the robot reference frame are provided.

The external component is fixed in the weld frame, the positioning of the internal component is adjustable, the assembly clearance between component varies from 0 to 1mm.

Access to all the clamping screws a was deported to the outside, the screw diameters a were standardized in order to make the use of the tools intuitive.

SPECIFICATIONS :

- **Tooling dedicated to the product and Customer resources**



Ref : 3605

Leistung hinzugefügt 02/11/21



**CEREST**

20 Rue des Frères Lumière  
68000 Colmar - FRANCE



**MAIL**

cerest@cerest.com



**TELEFONISCH**

+33 (0)3.89.21.02.56



**INTERNET**

www.cerest.com