



Rollomixer

Retrofit

● **Mechanische Studien**

● **Realisierungen**

● **Verkabelung**

○ **Steuerungen**

This project involves retrofitting a horizontal axis mixer **to comply with current CE and ATEX standards**.

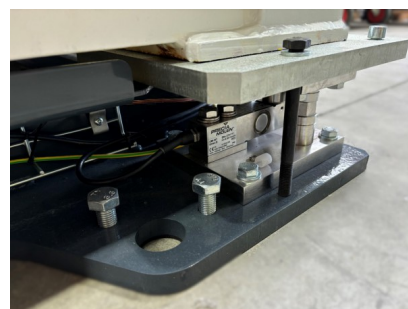
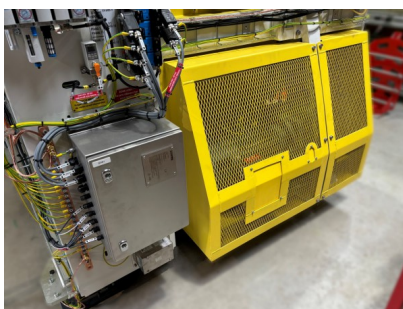
Fitted with mixing paddles and a bucket wheel, the original machine allows pellets to be loaded via the high inlet of the shutter system, then the mixed product to be discharged.

Various **functions have now been added**:

- Integration of a **weighing system** via 4 load cells
 - Integration of **coded locks** with captive key concept for **anti-blocking** (ATEX compatible)
 - Change of **geared motor** and integration of a brake
 - Addition of a **bypass position** to the loading/unloading flap
-
- Compliance with **ATEX standards** (100% compatible components, rigorous earthing, etc.)
 - Complete overhaul of the **pneumatic system**
 - ...

SPECIFICATIONS :

- **Mixing capacity: 1.5T**
- **Load cell accuracy: +/- 1 Kg**
- **Tare weight: 3.5T**
- **ATEX 2/22 compatible**



Ref : 3645

Leistung hinzugefügt 17/10/24



CEREST

20 Rue des Frères Lumière
68000 Colmar - FRANCE



MAIL

cerest@cerest.com



TELEFONISCH

+33 (0)3.89.21.02.56



INTERNET

www.cerest.com